

# Type 3512 & 3522

Product Information  
Model 3512 & 3522  
Digital Electronic Controller

Includes FREE Software

## Features

- Single unit - integrated controller & booster
- High accuracy digital control of air pressure  $\pm 0.5\%$
- Minimal air consumption at steady state pressure
- Shock resistant, position insensitive
- Weatherproof housing
- PC Programmable through MS Windows® based software
- Up to 8 devices can be connected on a single RS-485 line
- Accepts analog, PWM (Pulse Width Modulation) or Digital Command Signal
- C E approval pending

## Applications

- Gripper Control
- Welding Operations
- Actuator Control
- Machinery Automation
- Precision Robotics
- Tire Production & Test
- Web Tension
- Semiconductor Equipment
- Molding & Forming Operations

## Operational Description

The 3512 offers solenoid valve technology with forward flow exceeding those of most standard industrial electronic regulators or I/P transducers. Available with local keypad programming option or RS-485 Digital Communications for PLC or PC control.

- Dual solenoid valves with internal pressure sensor
- Advanced microprocessor control
- A built-in air volume booster provides the 3512 with forward flow up to 50 SCFM
- Proportional - Integral - Derivative (PID) control
- Output Ranges from 0 to 150 psig
- 4 digit display of output pressure available with keypad

*ElectroPneumatics*

**MB** MARSH BELLOFRAM®

# SPECIFICATIONS

## PNEUMATICS

Output Pressure Ranges	0-150 psig (10.3 BAR)
Flow	50 SCFM (395 slpm) @ 100 psig supply
Filtration	60 mesh screen built-in
Accuracy	± 0.5% FS Including the combined effects of Linearity, Repeatability and Hysteresis
Supply Pressure Range	110% max output pressure up to 200 psig max

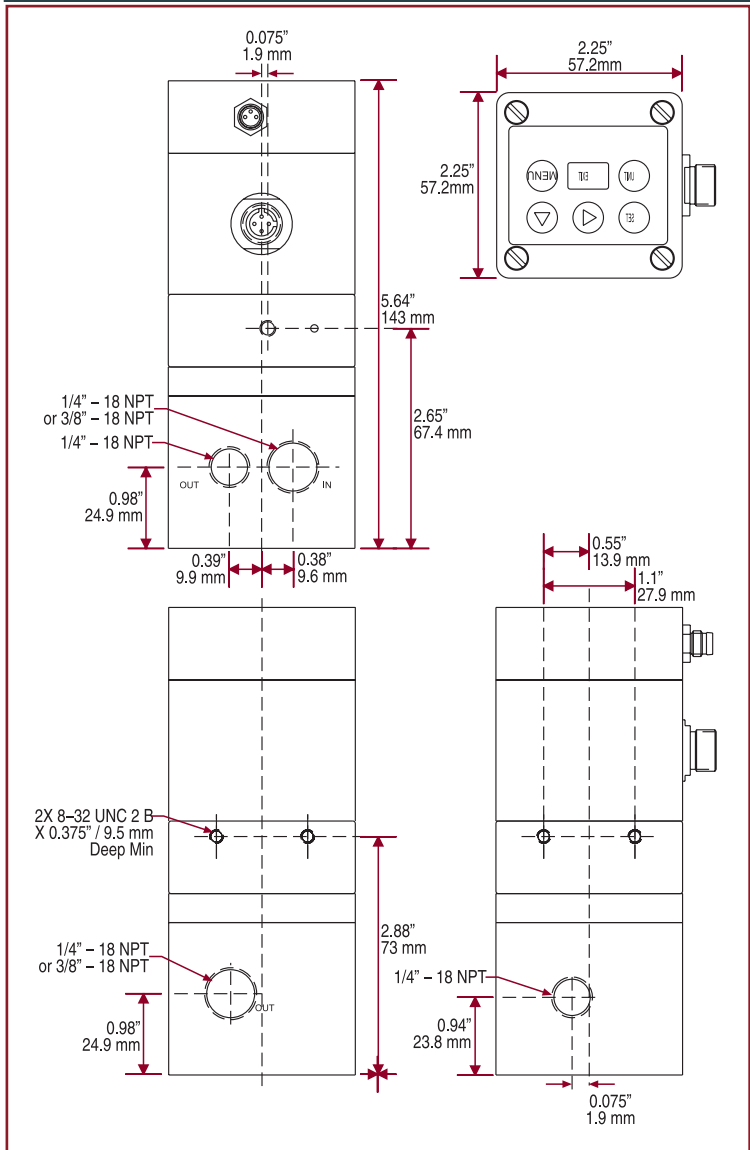
## ELECTRICAL

Supply Voltage	15± 10% VDC STD., 24± 10% VDC Consult Factory
Supply Current	80 mA standby 325 mA max
Command Signal	
Voltage	0-10 VDC
Current	4-20 mA
Other command signals selectable via keypad or RS-485 communications	
Analog Monitor Output	
Voltage	0-10 VDC

## ENVIRONMENTAL

Operating Temp	32° to 141° F (0 to 60° C)
Materials	
Wetted Parts	Aluminum, nickel, BUNA-N, 316 SS
Port Sizes	
Supply & Control Port	See ordering code 3/8" or 1/4" NPT, BSPP, or BSPT
Gauge	1/4" NPT, BSPP, or BSPT
Exhaust	No. 10-32 UNF Thread (manifold) 1/4" NPT, BSPP, or BSPT for relay
Weight	2 lbs. (0.9 kg)

## Product Information Model 3512 & 3522 Digital Electronic Controller



## HOW TO CREATE A 3512 or 3522 PART#

BASE MODEL NUMBER				COMMAND SIGNAL	OUTPUT PRESSURE RANGE			MOUNTING	PORT SIZE	CONNECTOR	OPTIONS
5		2						P		1	
1 Single loop	S Serial communication (RS-485)	E 0-10 V I 4-20mA field selectable ranges	Please indicate the lower limit of output pressure range down to 0 psig ∞	G Gauge (psig)	W Water column ("H <sub>2</sub> O)	Please indicate the upper limit of output pressure range up to 150 psig	P Pipe	Optional bracket mounting available as an accessory	Size of Supply & Output Ports	1 6 Pin Micro	00 No Options Consult Factory For Options
2 Double loop	P Keypad Programming with display								0 1/4" NPT 1 1/4" BSPT 2 1/4" BSPP 3 3/8" NPT 4 3/8" BSPT 5 3/8" BSPP	POWER CORDS must be ordered separately	

∞ If lower limit of output pressure range is more than 1 digit, consult factory. ◇ Other command signals selectable via keypad or RS-485 communications.

ORDERING EXAMPLE: 512PE2G115P0100- This is a Type 3512 with keypad programming, calibrated for a 0-10 V command signal, a 2 to 115 psig output pressure range with pipe mounting, and 1/4" NPT ports and no options. (A 6 pin connector is standard.)